

PNEUMATIC PISTON END TAPPED MODELS

- **Both Millimeter or Inch End Threads in Hole**
- **Air Discharge at Vibrator or Thru Exhaust Manifold**
- **Silent or Impacting Models**
- **All Steel Construction for Long Life**



Model 70 end-mounted series pneumatic piston vibrators produce a linear force with frequency and force adjustable with air pressure. A self-starting spring is installed for fast start in any position. A variety of options are available. The mounting hole can be supplied with an M-millimeter thread or US standard NF (National Fine) thread.

The piston can be supplied as an impacting one or air cushioned in up and down stroke.

Standard units exhaust air through air exhaust holes in the housing. Units can also be supplied with an exhaust manifold (EM) for attaching a muffler or air hose to lead off exhaust air.

For long life the Model 70 units should be lubricated and supplied with standard air cleaners. The Model 70 is all steel construction for long life.

The end mounted Model 70 units are a simple inexpensive solution for moving materials in bin and hoppers. Their linear force makes them ideal for small feeders and screen applications, as well as small compaction tables.

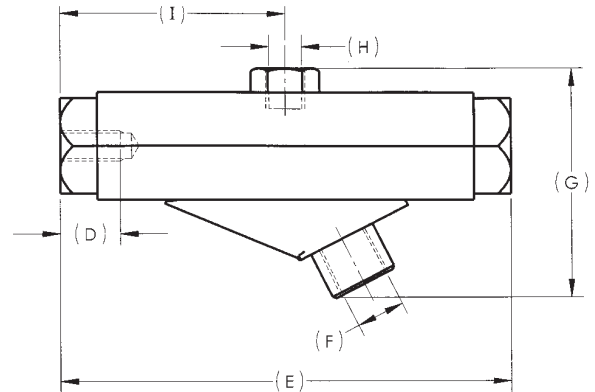
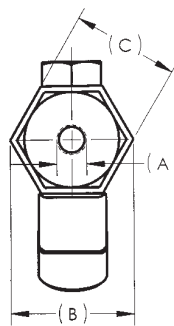
1-800-633-0032

TECHNICAL DATA:

Model 70 Piston Size	40 PSI/2.8 BAR		60 PSI/4.1 BAR		80 PSI/5.5 BAR		WEIGHT*		CONTENTS** IN BIN	
	CFM	VPM	CFM	VPM	CFM	VPM	lbs.	kg.	lbs.	kg.
5/8	2.5	9500	3	12000	4.5	14500	1/0	.45	Up to 100	25
3/4	3	9500	3.5	10500	5	13000	1.3	.6	100-400	25-100
3/4 S	2.5	7500	3	12000	4.5	14500	1.2	.55	100-200	25-50
1	5	7500	7	9000	8	11000	2.8	1.3	200-400	50-100
1 S	3	6500	3.5	10500	5	13000	2.6	1.2	100-400	25-100
1-1/4	5.5	6500	8	5500	10	7000	7	3.2	400-1000	100-250
1-1/4 S	5	3750	7	9000	8	11000	6.8	3.1	300-800	75-200

* EM models add .3 lbs.

** The following data is furnished as a guide in estimating the sizes of piston vibrators for standard hopper shapes containing dry, granular materials of 50 lbs/cu. ft. minimum bulk density. For other sizes and densities, contact VIBCO.



DIMENSIONS:

Model	A TAP SIZE		B		C		D		E		F		G		H		I		
	inch	mm	inch	mm	inch	mm	inch	mm	inch	mm	inch	mm	inch	mm	inch	mm	inch	mm	
			inch	mm	inch	mm	inch	mm	inch	mm	inch	mm	inch	mm	inch	mm	inch	mm	inch
70-5/8	5/16-24	M8 x 1.25	1.3	33	1.25	32	.63	16	4.75	120	1/4 NPT	2.4	35.4	1/8 NPT	2.37	60			
70-3/4	3/8-24	M10 x 1.5	1.6	41	1.38	35	.63	16	4.75	120	1/4 NPT	2.65	67	1/8 NPT	2.37	60			
70-1	1/2-20	M12 x 1.75	1.88	48	1.63	41	.63	16	4.75	120	1/4 NPT	2.9	74	1/8 NPT	2.37	60			
70-1-1/4	1/2-20	M12 x 1.75	2.31	59	2	51	.63	16	8	203	1/4 NPT	3.5	89	1/8 NPT	3.98	101			

TO ORDER:

1. Decide Size
2. Impacting is Standard. Add "S" for SILENT Unit
3. Is Exhaust Manifold Needed? Add "EM"
4. Specify "mm" or "inch" thread

We're The ^{SILENT} Vibrator Guys.



VIBCO, INC.

75 Stilson Road, P.O. Box 8
Wyoming, RI 02898
E-Mail: vibrators@vibco.com
Phone: (401) 539-2392 / (800) 633-0032
FAX: (401) 539-2584
<http://www.VIBCO.com>

West Coast:

Phoenix, Arizona 85254
Phone: (480) 596-1809
(800) 633-0032
FAX: (480) 596-1614

Canada:

2215 Dunwin Drive
Mississauga, Ont.L5L 1X1
Phone: (905) 828-4191
(800) 465-9709
FAX: (905) 828-5015

SEE US AT www.VIBCO.com

CATALOG #0106
©2001 VIBCO, INC.